

TUTORIAL PUBMED

Esse tutorial tem o intuito de demonstrar o uso do PUBMED para a busca de artigos científicos e algumas de suas propriedades e ferramentas.

Abra o navegador de sua escolha, e digite **pubmed.com**.

The screenshot shows the PubMed website interface. At the top, there is a navigation bar with 'NCBI', 'Resources', and 'How To' links. The main header features the 'PubMed.gov' logo and a search bar with a 'Search' button. A yellow callout box points to the search bar with the text: 'Para realizar uma pesquisa básica basta digitar os termos da sua procura e clicar em SEARCH. Para simplificar suponha que você queira buscar artigos que tenham como conteúdo o estresse sofrido pelos estudantes de medicina.'

Below the search bar, there is a section for 'PubMed Commons' with a featured comment. The main content area is divided into three columns: 'Using PubMed', 'PubMed Tools', and 'More Resources'. Each column contains several links to various resources and guides. A yellow callout box points to the 'Using PubMed' section with the text: 'As buscas devem ser realizadas em inglês. Se você não possui domínio da língua utilize ferramentas de idiomas disponíveis na internet'.

At the bottom of the page, there is a footer with a breadcrumb trail 'You are here: NCBI > Literature > PubMed' and a 'Write to the Help Desk' link. The footer is organized into five columns: 'GETTING STARTED', 'RESOURCES', 'POPULAR', 'FEATURED', and 'NCBI INFORMATION', each containing a list of links to various services and databases.

PubMed

medical student

Search

Help

Article types

Clinical Trial
Review
Customize ...

Text availability

Abstract
Free full text
Full text

PubMed Commons

Reader comments
Trending articles

Publication dates

5 years
10 years
Custom range...

Species

Humans
Other Animals

Clear all

Show additional filters

Summary 20

Results: 1 to 20

1. [Aspirin de double-blind](#)
Esmailizadeh S, et al. Clin Immunol Immunopathol. 2015 Jun 17. [Epub ahead of print] PMID: 26083643
2. [Mobile phone use and anxiety](#)
Foong YQ, et al. J Occup Environ Psychol. 2015 Jun 17. [Epub ahead of print] PMID: 26083643
3. [Maladjusted undergraduate medical students](#)
Bowel SJ, et al. PLoS One. 2015 Jun 17. [Epub ahead of print] PMID: 26083643
4. [Expanding the role of the medical student](#)
Brand G, et al. Gerontol Geriatr Educ. 2015 Jun 17. [Epub ahead of print] PMID: 26083643
5. [Undergraduate teaching of neurosurgery - what is the current practice in the UK and is there a need for improvement?](#)
Whitehouse KJ, Moore AJ. Br J Neurosurg. 2015 Jun 17:1-5. [Epub ahead of print] PMID: 26083138
6. [Seroprevalence of hepatitis A in Iranian adolescents: is it time to introduce a vaccine?](#)
Hoseini SG, Kelishadi R, Ataei B, Yaran M, Motlagh ME, Ardalan G, Tajadini MH, Mostafavi SN.

Send to:

Filters: [Manage Filters](#)

Next > Last >>

New feature

Try the new Display Settings option -

O Pubmed possui um banco de termos próprios para facilitar as suas buscas. Na nossa pesquisa agora estamos interessados em "medical students"

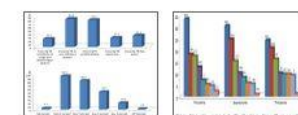
Irritable

Older People

Related searches

teaching medical students
depression medical students
medical students stress
empathy medical students
burnout medical students

PMC Images search for medical students



PubMed

medical students

Search

Help

Article types

Clinical Trial
Review
Customize ...

Text availability

Abstract
Free full text
Full text

PubMed Commons

Reader comments
Trending articles

Publication dates

5 years
10 years
Custom range...

Species

Humans
Other Animals

Clear all

Show additional filters

Summary 20 per page Sort by Most Recent

Results: 1 to 20 of 60363

<< First < Prev Page 1 of 3019 Next > Last >>

Send to:

Filters: [Manage Filters](#)

New feature

Try the new Display Settings option - Sort by Relevance

Results by year

O Pubmed mostra o resultado da sua pesquisa

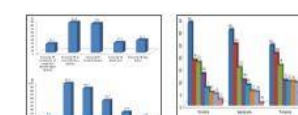
Aqui estão as informações sobre os artigos encontrados: autor (es), revistas, data da publicação, edição, nº da página...

1. [Associations of health behaviors, school performance and psychosocial problems in adolescents in The Netherlands](#)
Busch V, et al. Health Psychol. 2015 Jun 20. pii: dav058. [Epub ahead of print]
2. [The economic value of an investment in physiotherapy education: a net present value analysis](#)
Chisnall B, Vince T, Hall S, Tribe R. Int J Med Educ. 2015 Jun 21;6:76-83. doi: 10.5116/ijme.5572.a534. PMID: 26094249 [Similar articles](#)
3. [\[Simulation training for urinary drainage improves skill retention\]](#)
Ballouhey Q, Cros J, Lescure V, Clermidi P, Romain J, Guignon V, Bonnetblanc JM, Fourcade L. Prog Urol. 2015 Jun 17. pii: S1166-7087(15)00180-3. doi: 10.1016/j.purol.2015.05.006. [Epub ahead of print] French. PMID: 26094096 [Similar articles](#)
4. [The economic value of an investment in physiotherapy education: a net present value analysis](#)
Rivers G, Foo J, Ilic D, Nicklen P, Reeves S, Walsh K, Maloney S. J Physiother. 2015 Jun 17. pii: S1836-9553(15)00054-5. doi: 10.1016/j.jphys.2015.05.015. [Epub ahead of print] PMID: 26093804 [Similar articles](#)
5. [Brain Death and Organ Donation: Knowledge, Awareness, and Attitudes of Medical, Law, Divinity, Nursing, and Communication Students](#)
Kocaay AF, Celik SU, Eker T, Oksuz NE, Akyol C, Tuzuner A. Transplant Proc. 2015 Jun;47(5):1244-1248. doi: 10.1016/j.transproceed.2015.04.071.

Related searches

teaching medical students
depression medical students
medical students stress
burnout medical students
empathy medical students

PMC Images search for medical students



Article types
Clinical Trial
Review
Customize ...

Text availability
Abstract
Free full text
Full text

PubMed Commons
Reader comments
Trending articles

Publication dates
5 years
10 years
Custom range...

Species
Humans
Other Animals

Clear all

Show additional filters

Summary 20 per page Sort by Most Recent

Send to:

Filters: [Manage Filters](#)

Results: 1 to 20 of 60363

<< First < Prev Page 1 of 3019 Next > Last >>

☐ [Associations of health behaviors, school performance and psychosocial problems in adolescents in](#)

1. [The Netherlands.](#)

Busch V, Laninga-Wijnen L, Schrijvers AJ, De Leeuw JR.
Health Promot Int. 2015 Jun 20. pii: dav058. [Epub ahead of print]

PMID: 26094252

[Similar articles](#)

☐ [Evaluation of outcomes of a formative objective structured clinical examination for second-year UK](#)

2. [medical students.](#)

Chisnall B, Vince T, Hall S, Tribe R.
Int J Med Educ. 2015 Jun 21;6:76-83. doi: 10.5116/ijme.5572.a534.

PMID: 26094249

[Similar articles](#)

☐ [\[Simulation training for urinary drainage impro](#)

3. Ballouhey Q, Cros J, Lescure V, Clermidi P, R
Prog Urol. 2015 Jun 17. pii: S1166-7087(15)00180-3. [Epub ahead of print] French.

PMID: 26094096

[Similar articles](#)

☐ [The economic value of an investment in physiotherapy education: a net present value analysis.](#)

4. Rivers G, Foo J, Ilic D, Nicklen P, Reeves S, Walsh K, Maloney S.
J Physiother. 2015 Jun 17. pii: S1836-9553(15)00054-5. doi: 10.1016/j.jphys.2015.05.015. [Epub ahead of print]

PMID: 26093804

[Similar articles](#)

☐ [Brain Death and Organ Donation: Knowledge, Awareness, and Attitudes of Medical, Law, Divinity,](#)

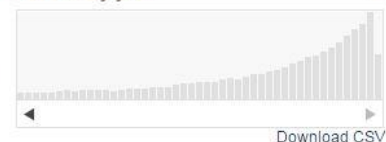
5. [Nursing, and Communication Students.](#)
Kocaay AF, Celik SU, Eker T, Oksuz NE, Akyol C, Tuzuner A.
Transplant Proc. 2015 Jun;47(5):1244-1248. doi: 10.1016/j.transproceed.2015.04.071.

Aqui aparecem outras
sugestões de buscas
relacionadas.

New feature

Try the new Display Settings option -
Sort by Relevance

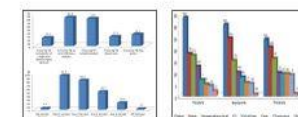
Results by year



Related searches

teaching medical students
depression medical students
medical students stress
burnout medical students
empathy medical students

PMC Images search for medical
students



☐ [Brain Death and Organ Donation: Knowledge, Awareness, and Attitudes of Medical, Law, Divinity,](#)

5. [Nursing, and Communication Students.](#)
Kocaay AF, Celik SU, Eker T, Oksuz NE, Akyol C, Tuzuner A.
Transplant Proc. 2015 Jun;47(5):1244-1248. doi: 10.1016/j.transproceed.2015.04.071.

PMID: 26093691

[Similar articles](#)

☐ [Unusual Variation of the Biceps Brachii with Possible Median Nerve Entrapment.](#)

6. Yershov D, Hudák R.
Prague Med Rep. 2015 Jun 20;116(2):167-172.

PMID: 26093671

[Similar articles](#)

☐ [Internet Addiction Disorder in a Sample of 402 High School Students.](#)

7. Taranto F, Goracci A, Bolognesi S, Borghini E, Fagioli A.
Psychiatr Pol. 2015;49(2):255-263. doi: 10.12740/PP/32500. English, Polish.

PMID: 26093590

[Similar articles](#)

☐ [The correlations of glycated hemoglobin and carbohydrate metabolism parameters with heart rate](#)

8. [variability in apparently healthy sedentary young male subjects.](#)
Cherkas A, Abrahamovych O, Golota S, Nersesyan A, Pichler C, Serhiyenko V, Knasmüller S,
1016/j.redox.2015.05.007. [Epub ahead of print]

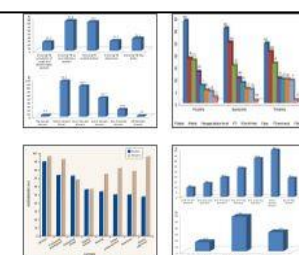
PMID: 26092471

[Similar articles](#)

Através da universidade temos acesso
ao portal de periódicos Capes através
do qual podemos adquirir estes
artigos sem custo. Confirmam nosso
próximo tutorial sobre como acessa-lo

Existem artigos com acesso somente
mediante pagamento

E aqui links para artigos
inteiros de graça



See more (1524)...

Titles with your search terms

Effects of mindfulness meditation on serum
cortisol of medical stu [J Med Assoc Thai. 2013]

Relationship between performance on the NBME
Comprehensive Basic Science [Acad Med. 2010]

Burnout among U.S. medical students,
residents, and early career phy [Acad Med. 2014]

See more...

8901 free full-text articles in PubMed
Central

Factors considered by undergraduate medical
students when selecting s [Pan Afr Med J. 2015]

Intestinal helminthic infections among
elementary students of Bz [Pan Afr Med J. 2015]

Comparison between theophylline, N-
acetylcysteine, and the [ARYA Atheroscler. 2015]

See all (8901)...

Find related data

Database: Select

Find items

PubMed ▾

medical students

Search

[Create RSS](#) [Create alert](#) [Advanced](#)
[Help](#)

Article types
Clinical Trial
Review
Customize ...

Text availability
Abstract
Free full text
Full text

PubMed Commons
Reader comments
Trending articles

Publication dates
5 years
10 years
Custom range...

Species
Humans
Other Animals

[Clear all](#)[Show additional filters](#)

Summary ▾ 20 per page ▾ Sort by Most Recent ▾

Send to: ▾

Filters: [Manage Filters](#)

Results: 1 to 20 of 60363

<< First < Prev Page 1 of 3019 Next > Last >>

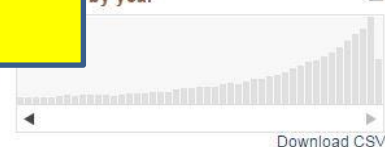
- ☐ [Associations of health behaviors, school performance and psychosocial problems in adolescents in The Netherlands.](#)
Busch V, Laninga-Wijnen L, Schrijvers AJ, De Leeuw JR.
Health Promot Int. 2015 Jun 20. pii: dav058. [Epub ahead of print]
PMID: 26094252
[Similar articles](#)
- ☐ [Evaluation of outcomes of a formative objective structured clinical examination for second-year UK medical students.](#)
Chisnall B, Vince T, Hall S, Tribe R.
Int J Med Educ. 2015 Jun 21;6:76-83. doi: 10.5116/ijme.5572.a534.
PMID: 26094249
[Similar articles](#)
- ☐ [\[Simulation training for urinary drainage improves skill retention\].](#)
Ballouhey Q, Cros J, Lescure V, Clermidi P, Romain J, Guignonis V, Bonnetblanc JM, Fourcade L.
Prog Urol. 2015 Jun 17. pii: S1166-7087(15)00180-3. doi: 10.1016/j.purol.2015.05.006. [Epub ahead of print] French.
PMID: 26094096
[Similar articles](#)
- ☐ [The economic value of an investment in physiotherapy education: a net present value analysis.](#)
Rivers G, Foo J, Illic D, Nicklen P, Reeves S, Walsh K, Maloney S.
J Physiother. 2015 Jun 17. pii: S1836-9553(15)00054-5. doi: 10.1016/j.jphys.2015.05.015. [Epub ahead of print]
PMID: 26093804
[Similar articles](#)
- ☐ [Brain Death and Organ Donation: Knowledge, Awareness, and Attitudes of Medical, Law, Divinity, Nursing, and Communication Students.](#)
Kocaay AF, Celik SU, Eker T, Oksuz NE, Akyol C, Tuzuner A.
Transplant Proc. 2015 Jun;47(5):1244-1248. doi: 10.1016/j.transproceed.2015.04.071.

Agora você quer buscar artigos sobre estresse em geral: usa-se o mesmo procedimento.

New feature

Try the new Display Settings option -
Sort by Relevance

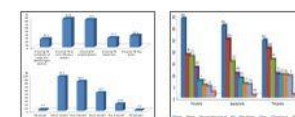
by year



Related searches

teaching medical students
depression medical students
medical students stress
burnout medical students
empathy medical students

PMC Images search for medical students



PubMed ▾

stress

Search

[Create RSS](#) [Create alert](#) [Advanced](#)
[Help](#)

Article types
Clinical Trial
Review
Customize ...

Text availability
Abstract
Free full text
Full text

PubMed Commons
Reader comments
Trending articles

Publication dates
5 years
10 years
Custom range...

Species
Humans
Other Animals

[Clear all](#)[Show additional filters](#)

Summary ▾ 20 per page ▾ Sort by Most Recent ▾

Send to: ▾

Filters: [Manage Filters](#)

Results: 1 to 20 of 633273

<< First < Prev Last >>

- ☐ [Quantitation of the anaesthetic xylenol red in the plasma of rats.](#)
Doran GS, Bradbury LA.
J Chromatogr B Anal Technol Biomed. [Epub ahead of print]
PMID: 26094209
[Similar articles](#)
- ☐ [Tightrope walkers suffering in silence: A qualitative study into the experiences of older people who have an adult child with cancer.](#)
Van Humbeeck L, Dillen L, Piers R, Deveugle M, Grypdonck M, Verhaeghe S, Van Den Noortgate N.
Int J Nurs Stud. 2015 Jun 6. pii: S0020-7489(15)00187-X. doi: 10.1016/j.ijnurstu.2015.05.010. [Epub ahead of print]
PMID: 26094062
[Similar articles](#)
- ☐ [Ecological risk assessment of silicon dioxide nanoparticles in a freshwater fish Labeo rohita: Hematology, ionoregulation and gill Na⁺/K⁺ ATPase activity.](#)
Krishna Priya K, Ramesh M, Saravanan M, Ponpandian N.
Ecotoxicol Environ Saf. 2015 Jun 18;120:295-302. doi: 10.1016/j.ecoenv.2015.05.032. [Epub ahead of print]
PMID: 26094035
[Similar articles](#)
- ☐ [Low doses of the common alpha-cypermethrin insecticide affect behavioural thermoregulation of the non-targeted beneficial carabid beetle Platynus assimilis \(Coleoptera: Carabidae\).](#)
Merivee E, Tooming E, Must A, Sibul I, Williams IH.
Ecotoxicol Environ Saf. 2015 Jun 18;120:286-294. doi: 10.1016/j.ecoenv.2015.06.013. [Epub ahead of print]
PMID: 26094034
[Similar articles](#)
- ☐ [Aberrant maternal inflammation as a cause of pregnancy complications: A potential therapeutic target?](#)

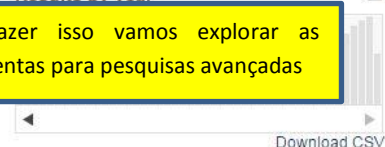
Termos amplos resultam em buscas com um número muito grande de resultados. Agora vejamos algumas maneiras de refinar e especificar determinadas pesquisas

Para fazer isso vamos explorar as ferramentas para pesquisas avançadas

New feature

Try the new Display Settings option -
Sort by Relevance

Results by year



Related searches

oxidative stress
er stress
stress disorder
traumatic stress
shear stress

Titles with your search terms

What is oxidative stress? [Metabolism. 2000]
Oxidative stress in health and disease: the therapeutic potential of [Mol Aspects Med. 2011]
Stress and hypertension. [WMJ. 1998]
[See more...](#)

NCBI

Resources

How To

Sign in to NCBI

PubMed Home

More Resources

Help

PubMed Advanced Search Builder

YouTube Tutorial

Use the builder below to create your search

Edit

Clear

Builder

All Fields

AND

All Fields

Show index list

Show index list

Search

Add to history

Nas ferramentas de busca avançadas você pode montar buscas com os conectivos AND, OR ou NOT: Este tipo de busca sempre representa um número menor de resultados

History

Download history

Clear history

Search	Add to builder		Items found	Time
#2	Add	Search stress	633273	10:41:14
#1	Add	Search medical students	60363	10:26:17

O histórico de buscas é outro aspecto muito útil do PubMed. A partir dele, além de verificar o seu trabalho, você pode juntar as pesquisas feitas previamente. Veja:

You are here: NCBI > Literature > PubMed

Write to the Help Desk

GETTING STARTED

RESOURCES

POPULAR

FEATURED

NCBI INFORMATION

NCBI

Resources

How To

Sign in to NCBI

PubMed Home

More Resources

Help

PubMed Advanced Search Builder

YouTube Tutorial

Use the builder below to create your search

Edit

Clear

Builder

All Fields

AND

All Fields

Show index list

Show index list

Search

Add to history

History

Download history

Clear history

Search	Add to builder		Items found	Time
#2	Add	Search stress	633273	10:41:14
#1	Add	Search medical students	60363	10:26:17

Observe o número das pesquisas. Com ele e mais o uso dos conectivos você mescla pesquisas realizadas anteriormente.

You are here: NCBI > Literature > PubMed

Write to the Help Desk

GETTING STARTED

RESOURCES

POPULAR

FEATURED

NCBI INFORMATION

NCBI

Resources

How To

Sign in to NCBI

PubMed Home

More Resources

Help

PubMed Advanced Search Builder

YouTube Tutorial

Use the builder below to create your search

←

Edit

Clear

Builder

All Fields

AND

All Fields

Search

or

Add to history

Clique em EDIT para habilitar a linha de busca. Depois insira os números das suas pesquisas com um dos conectores.

Show index list

Show index list

History

Download history

Clear history

Search	Add to builder	Query	Items found	Time
#2	Add	Search stress	633273	10:41:14
#1	Add	Search medical students	60363	10:26:17

You are here: NCBI > Literature > PubMed

Write to the Help Desk

GETTING STARTED

NCBI Education

NCBI Help Manual

NCBI Handbook

Training & Tutorials

RESOURCES

Chemicals & Bioassays

Data & Software

DNA & RNA

Domains & Structures

Genes & Expression

Genetics & Medicine

Genomes & Maps

POPULAR

PubMed

Bookshelf

PubMed Central

PubMed Health

BLAST

Nucleotide

Genome

FEATURED

Genetic Testing Registry

PubMed Health

GenBank

Reference Sequences

Gene Expression Omnibus

Map Viewer

Human Genome

NCBI INFORMATION

About NCBI

Research at NCBI

NCBI News

NCBI FTP Site

NCBI on Facebook

NCBI on Twitter

NCBI on YouTube

NCBI

Resources

How To

Sign in to NCBI

PubMed Home

More Resources

Help

PubMed Advanced Search Builder

YouTube Tutorial

#1 and #2

Cancel

Search

or

Add to history

Clear

Agora vamos cruzar a pesquisa de "stress" com a "medical students" usando AND. Dessa maneira o PubMed resulta em artigos onde ambos os termos se encontram.

History

Download history

Clear history

Search	Query	Items found	Time
#2 Search stress		633273	10:41:14
#1 Search medical students		60363	10:26:17

You are here: NCBI > Literature > PubMed

Write to the Help Desk

GETTING STARTED

NCBI Education

NCBI Help Manual

NCBI Handbook

Training & Tutorials

RESOURCES

Chemicals & Bioassays

Data & Software

DNA & RNA

Domains & Structures

Genes & Expression

Genetics & Medicine

Genomes & Maps

Homology

Literature

Proteins

Sequence Analysis

Taxonomy

POPULAR

PubMed

Bookshelf

PubMed Central

PubMed Health

BLAST

Nucleotide

Genome

SNP

Gene

Protein

PubChem

FEATURED

Genetic Testing Registry

PubMed Health

GenBank

Reference Sequences

Gene Expression Omnibus

Map Viewer

Human Genome

Mouse Genome

Influenza Virus

Primer-BLAST

Sequence Read Archive

NCBI INFORMATION

About NCBI

Research at NCBI

NCBI News

NCBI FTP Site

NCBI on Facebook

NCBI on Twitter

NCBI on YouTube

PubMed

#1 and #2

Search

Create RSS Create alert Advanced

Help

Article types

Clinical Trial
Review
Customize ...

Text availability

Abstract
Free full text
Full text

Publication dates

5 years
10 years
Custom range...

Species

Humans
Other Animals

Clear all

Show additional filters

Summary ▾ 20 per page ▾ Sort by Publication Date ▾

Send to: ▾

Filters: [Manage Filters](#)

Results: 1 to 20 of 2287

<< First < Prev Page 1 of 115 Next > Last >>

- ☐
- [Alcohol-Specific Coping Styles of Adult Children of Individuals with Alcohol Use Disorders and Associations with Psychosocial Functioning.](#)

Drapkin ML, Eddie D, Buffington

Alcohol Alcohol. 2015 Jul;50(4):463-9. doi: 10.1093/alcalc/agt023. Epub 2015 Mar 22.

PMID: 25802055

[Similar articles](#)

- ☐
- [Exploring Personality Dimensions in Laparoscopic Task in the Objective Structured Clinical Examination.](#)

Malhotra N, Poolton JM, Wilson MR, Leung G, Zhu F, Fan JK, Masters RS.

J Surg Educ. 2015 Jul-Aug;72(4):662-9. doi: 10.1016/j.jsurg.2014.12.011. Epub 2015 Apr 7.

PMID: 25857212

[Similar articles](#)

- ☐
- [Changes in emotional distress, short term memory, and sustained attention following 6 and 12 sessions of progressive muscle relaxation training in 10-11 years old primary school children.](#)

Hashim HA, Zainol NA.

Psychol Health Med. 2015 Jul;20(5):623-8. doi: 10.1080/13548506.2014.1002851. Epub 2015 Jan 21.

PMID: 25603900

[Similar articles](#)

- ☐
- [Hidden prevalence of lower urinary tract symptoms in healthy nulligravid young women.](#)

4. van Breda HM, Bosch JL, de Kort LM.

Int Urogynecol J. 2015 Jun 18. [Epub ahead of print]

PMID: 26085465

[Similar articles](#)

- ☐
- [Vaccination learning experience of nursing students: a grounded theory study.](#)

5. Ildarabadi E, Moonaghi HK, Heydari A, Taghipour A, Abdollahimohammad A.

J Educ Eval Health Prof. 2015 Jun 18. doi: 10.3352/jeehp.2015.12.29. [Epub ahead of print]

PMID: 26084680

[Similar articles](#)

O número de resultados diminuiu bastante, mas ainda é possível refinar ainda mais a sua consulta. Clique em SHOW ADDITIONAL FILTERS para ampliar a quantidade de filtros disponíveis.

New feature

Try the new Display Settings option - Sort by Relevance

Results by year



Download CSV

Find related data

Database:

Find items

Search details

#1 AND #2

Search

See more...

Recent Activity

Turn Off Clear

PubMed

#1 and #2

Search

Create RSS Create alert Advanced

Help

Article types

Clinical Trial
Review
Customize ...

Text availability

Abstract
Free full text
Full text

Publication dates

5 years
10 years
Custom range...

Species

Humans
Other Animals

Clear all

Show additional filters

Summary ▾ 20 per page ▾ Sort by Publication Date ▾

Send to: ▾

Filters: [Manage Filters](#)

Results: 1 to 20 of 2287

<< First < Prev Page 1 of 115 Next > Last >>

- ☐
- [Alcohol-Specific Coping Styles of Adult Children of Individuals with Alcohol Use Disorders and Associations with Psychosocial Functioning.](#)

Drapkin ML, Eddie D, Buffington AJ, McCrady BS.

Alcohol Alcohol. 2015 Jul;50(4):463-9. doi: 10.1093/alcalc/agt023. Epub 2015 Mar 22.

PMID: 25802055

[Similar articles](#)

- ☐
- [Exploring Personality Dimensions in Laparoscopic Task in the Objective Structured Clinical Examination.](#)

Malhotra N, Poolton JM, Wilson MR, Leung G, Zhu F, Fan JK, Masters RS.

J Surg Educ. 2015 Jul-Aug;72(4):662-9. doi: 10.1016/j.jsurg.2014.12.011. Epub 2015 Apr 7.

PMID: 25857212

[Similar articles](#)

- ☐
- [Changes in emotional distress, short term memory, and sustained attention following 6 and 12 sessions of progressive muscle relaxation training in 10-11 years old primary school children.](#)

Hashim HA, Zainol NA.

Psychol Health Med. 2015 Jul;20(5):623-8. doi: 10.1080/13548506.2014.1002851. Epub 2015 Jan 21.

PMID: 25603900

[Similar articles](#)

- ☐
- [Hidden prevalence of lower urinary tract symptoms in healthy nulligravid young women.](#)

4. van Breda HM, Bosch JL, de Kort LM.

Int Urogynecol J. 2015 Jun 18. [Epub ahead of print]

PMID: 26085465

[Similar articles](#)

- ☐
- [Vaccination learning experience of nursing students: a grounded theory study.](#)

5. Ildarabadi E, Moonaghi HK, Heydari A, Taghipour A, Abdollahimohammad A.

J Educ Eval Health Prof. 2015 Jun 18. doi: 10.3352/jeehp.2015.12.29. [Epub ahead of print]

PMID: 26084680

[Similar articles](#)

Custom date range

2000 01 01 to 2001 12 31

Apply

Clear

Você pode limitar a sua busca por data de publicação

New feature

Try the new Display Settings option - Sort by Relevance

Results by year



Download CSV

Find related data

Database:

Find items

Search details

#1 AND #2

Search

See more...

Recent Activity

Turn Off Clear

Q (medical students) AND and AND (stress) AND ("2000/01/01"[Pdat] ... (95) PubMed

PubMed.gov
US National Library of Medicine
National Institutes of Health

PubMed #1 and #2 Search

Create RSS Create alert Advanced Help

Article types
Clinical Trial
Review
Customize ...

Text availability
Abstract
Free full text
Full text

Publication dates
5 years
10 years
Custom range...

Species
Humans
Other Animals

Languages
English
Customize ...

Clear all
Show additional filters

Summary 20 per page Sort by Publication Date Send to: Filters: Manage Filters

Results: 1 to 20 of 2287

<< First < Prev Page 1 of 115 Next > Last >>

1. [Alcohol-Specific Coping Styles of Adult Children of Individuals with Alcohol Use Disorders and Associations with Psychosocial Functioning.](#)
Drapkin ML, Eddie D, Buffington AJ, McCrady BS.
Alcohol Alcohol. 2015 Jul;50(4):463-9. doi: 10.1093/alcalc/aggv023. Epub 2015 Mar 22.
PMID: 25802055
[Similar articles](#)

2. [Exploring Personality Dimensions That Influence Practice and Performance of a Simulated Laparoscopic Task in the Objective Structured Clinical Examination.](#)
Jeung G, Zhu F, Fan JK, Masters RS.
J Surg Res. 2015 Jun 18. [Epub ahead of print] doi: 10.1016/j.jss.2014.12.011. Epub 2015 Apr 7.

3. [Changes in emotional distress, short term memory, and sustained attention following 6 and 12 sessions of progressive muscle relaxation training in 10-11 years old primary school children.](#)
Hashim HA, Zainol NA.
Psychol Health Med. 2015 Jul;20(5):623-8. doi: 10.1080/13548506.2014.1002851. Epub 2015 Jan 21.
PMID: 25603900
[Similar articles](#)

4. [Hidden prevalence of lower urinary tract symptoms in healthy nulligravid young women.](#)
van Breda HM, Bosch JL, de Kort LM.
Int Urogynecol J. 2015 Jun 18. [Epub ahead of print]
PMID: 26085465
[Similar articles](#)

5. [Vaccination learning experience of nursing students: a grounded theory study.](#)
Ildarabadi E, Moonaghi HK, Heydari A, Taghipour A, Abdollahimohammad A.
J Educ Eval Health Prof. 2015 Jun 18. doi: 10.3352/jeehp.2015.12.29. [Epub ahead of print]
PMID: 26084680
[Similar articles](#)

Muitos artigos falam sobre pesquisas em animais. Limite esse tipo de artigo.

New feature
Try the new Display Settings option - Sort by Relevance

Results by year

Download CSV

Find related data
Database: Select
Find items

Search details
#1 AND #2
Search See more...

Recent Activity
Turn Off Clear
Q (medical students) AND and AND (stress) AND ("2000/01/01"[PDat] ... (95) PubMed

NCBI Resources How To Sign in to NCBI

PubMed.gov
US National Library of Medicine
National Institutes of Health

PubMed stress Search

Create RSS Create alert Advanced Help

Article types
Clinical Trial
Review
Customize ...

Text availability
Abstract
Free full text
Full text

Publication dates
5 years
10 years
Custom range...

Species
Humans
Other Animals

Languages
English
Portuguese
Customize ...

Clear all
Show additional filters

Summary 20 per page Sort by Most Recent Send to: Filters: Manage Filters

Results: 1 to 20 of 1286

Filters activated: Portuguese. Clear all to show 633430 items.

1. [New Exercise-Dipyridamole Combined Test for Nuclear Cardiology in Insufficient Effort: Appropriate Diagnostic Sensitivity Keeping Exercise Prognosis.](#)
Cortinas IV, Beretta M, Alonso O, Mut F.
Arq Bras Cardiol. 2015 May 29. pii: S0066-782X2015005050051. [Epub ahead of print] Portuguese, English.
PMID: 26039661 Free Article
[Similar articles](#)

2. [Association between social support and quality of life of relative caregivers of elderly dependents.](#)
Anjos KF, Boery RN, Pereira R, Pedreira LC, Vilela AB, Santos VC, Rosa Dde O.
Cien Saude Colet. 2015 May;20(5):1321-30. doi: 10.1590/1413-81232015205.14192014. English, Portuguese.
PMID: 26017935 Free Article

3. [Fibrosis: a new animal model.](#)
Lu B, Ramos AC, Bishop CE, Andersson KE.
J Surg Res. 2015 Jun 18. [Epub ahead of print] doi: 10.1016/j.jss.2014.12.011. Epub 2015 Apr 7.

4. [Chinese auriculotherapy to improve quality of life of nursing team.](#)
Kurebayashi LF, Silva MJ.
Rev Bras Enferm. 2015 Jan-Feb;68(1):117-123. English, Portuguese.
PMID: 25946503 Free Article
[Similar articles](#)

5. [Prevalence of depression among firefighters.](#)
Lima Ede P, Assunção AA, Barreto SM.
Cad Saude Publica. 2015 Apr;31(4):733-43. Portuguese.
PMID: 25945983 Free Article
[Similar articles](#)

Os filtros ativos são exibidos acima dos resultados

Neste caso realizamos uma pesquisa em português, após clicar em CUSTOMIZE para acionar o filtro.

New feature
Try the new Display Settings option - Sort by Relevance

Results by year

Download CSV

Related searches
oxidative stress
er stress
stress disorder
traumatic stress
shear stress

Titles with your search terms
What is oxidative stress? [Metabolism. 2000]
Oxidative stress in health and disease: the therapeutic potential of [Mol Aspects Med. 2011]
Stress and hypertension. [WMJ. 1998]
See more...

Pronto !! O artigo esta disponível para a leitura, impressão, salvar como, etc...

Introdução

A qualidade de vida dos trabalhadores tem sido amplamente discutida na atualidade e sua avaliação pode subsidiar medidas de promoção e educação em saúde ¹. O mototaxismo é uma atividade laboral que surgiu em bases informais, cujos profissionais se submetem a condições diversas para aumentar sua produtividade e lucratividade, expondo-se a múltiplos agravos e vulnerabilizando seu processo saúde/doença, podendo interferir negativamente na sua qualidade de vida ^{2,3}.

Nesse contexto, a globalização tem influenciado sobremaneira a constituição do novo modelo socioeconômico, acarretando mudanças estruturais decorrentes das práticas capitalistas, resultando numa reestruturação do mercado de trabalho, do emprego e da força de trabalho, a qual deve adaptar-se a esse novo mundo ⁴. O processo de desenvolvimento urbano brasileiro ocasionou mudanças negativas nas relações de mercado e de organização do processo de trabalho, gerando desemprego e impulsionando as populações à crescente procura por atividades laborais informais para garantir sua sobrevivência e sustento de suas famílias ⁵.

desgaste físico e emocional), que podem elevar os fatores condicionantes/determinantes para envolvimento em acidentes de trânsito, que se configuram como acidentes de trabalho, além de originarem distúrbios do sono, fadiga, irritabilidade, sedentarismo, entre outros problemas ^{6,9}.

O mototaxismo caracteriza-se como uma atividade sujeita a agravos diversos, sendo estes decorrentes da exposição a acidentes por causas externas e/ou aos agentes físicos, biológicos e psicossociais. Essa exposição múltipla pode influenciar negativamente na qualidade de vida e declínio progressivo nas condições de saúde destes trabalhadores ¹⁰, interferindo nos aspectos psicossociais da sua vida pessoal e laboral, bem como daqueles que com eles convivem, como familiares, usuários do serviço e demais envolvidos.

Por se tratar de trabalho informal, estes trabalhadores não possuem proteção da Consolidação das Leis do Trabalho (CLT) ¹¹ em caso de acidentes de trânsito e adoecimento. Assim, quando considerada a qualidade de vida de mototaxistas é necessário analisar o contexto no qual eles estão inseridos, incluindo análise das condições de trabalho e aspectos psicossociais envolvidos nas suas atividades laborais.

1 FOLLOWER · 13 VIEWS

NCBI Resources How To Sign in to NCBI

PubMed.gov US National Library of Medicine National Institutes of Health

PubMed Advanced Search

Abstract

Cad Saude Publica. 2015 Jan;31(1):97-110.

[Association between psychosocial aspects of work and quality of life among motorcycle taxi drivers].

[Article in Portuguese]

Teixeira JR, Boery EN, Casotti CA, Araújo TM, Pereira R, Ribeiro LJ, Rios MA, Amorim CR, Moreira RM, Boery RN, Sales ZN.

Abstract

This study aimed to evaluate the quality of life of motorcycle taxi drivers and the association with psychosocial characteristics of their work. This was a cross-sectional epidemiological study with a sample of 400 motorcycle taxi drivers in Jequié, Bahia State, Brazil. The study used a form containing demographic and socioeconomic data, WHO Quality of Life-Bref Questionnaire (WHOQOL-Bref), and the Job Content Questionnaire (JCQ). Motorcycle taxi drivers with greater decision-making control over their work showed better self-rated quality of life in the psychological domain; those with high psychological demands presented better self-rated quality of life in the social relations and environmental domains; those with high strain and active work showed better self-rated quality of life in the social and environmental domains. The psychosocial work environment and especially decision-making autonomy were thus important determinants of self-rated quality of life in this group of motorcycle taxi drivers.

PMID: 25715295 [PubMed - indexed for MEDLINE] Free full text

Publication Types, MeSH Terms

LinkOut - more resources

Full Text Sources

Scientific Electronic Library Online

Other Literature Sources

Access more work from the authors - ResearchGate

PubMed Commons

0 comments

PubMed Commons home

How to join PubMed Commons

Send to:

Full text links

free full text available at [SciELO.org](#)

Save items

Add to Favorites

Similar articles

Impact of the psychosocial aspects of work on the quality of life of te; [Rev Bras Psiquiatr. 2009]

Working conditions, self-perceived stress, anxiety, depression at [BMC Public Health. 2008]

[Use of personal protective equipment for motorcycle taxi driver [Cad Saude Publica. 2014]

Relationship of psychosocial work factors and health-related quality of life in r [Ind Health. 2007]

Occupational factors associated with low back pain in urban taxi drive [Occup Med (Lond). 2005]

See reviews...

See all...

Related information

MedGen

Recent Activity

Turn Off Clear

[Association between psychosocial aspects of work and quality of life among mot PubMed

De volta ao resumo do artigo, podemos enviá-lo para o "clipboard". Artigo enviados para o clipboard ficam salvos e estarão disponíveis durante ou depois das suas buscas.

NCBI Resources How To Sign in to NCBI

PubMed.gov
US National Library of Medicine
National Institutes of Health

PubMed Advanced Search

Abstract

Cad Saude Publica. 2015 Jan;31(1):97-110.

[Association between psychosocial aspects of work and quality of life among motorcycle taxi drivers]
[Article in Portuguese]
Teixeira JR, Boery EN, Casotti CA, Araújo TM, Pereira R, Ribeiro J, Rios MA, Amorim CR, Moreira RM, Boery RN, Sales Z

Abstract
This study aimed to evaluate the quality of life of motorcycle taxi drivers and the association with psychosocial characteristics of their work. This was a cross-sectional epidemiological study with a sample of 400 motorcycle taxi drivers in Jequié, Bahia State, Brazil. The study used a form containing demographic and socioeconomic data, WHO Quality of Life-Bref Questionnaire (WHOQOL-Bref), and the Job Content Questionnaire (JCQ). Motorcycle taxi drivers with greater decision-making control over their work showed better self-rated quality of life in the psychological domain; those with high psychological demands presented better self-rated quality of life in the social relations and environmental domains; those with high strain and active work showed better self-rated quality of life in the social and environmental domains. The psychosocial work environment and especially decision-making autonomy were thus important determinants of self-rated quality of life in this group of motorcycle taxi drivers.

PMID: 25715295 [PubMed - indexed for MEDLINE] Free full text

Publication Types, MeSH Terms

LinkOut - more resources

Full Text Sources
[Scientific Electronic Library Online](#)

Other Literature Sources
[Access more work from the authors - ResearchGate](#)

Send to: Choose Destination
☐ File ☒ Clipboard
☐ Collections ☐ E-mail
☐ Order ☐ My Bibliography
☐ Citation manager

Add 1 items.
Add to Clipboard

Impact of the psychosocial aspects of work on the quality of life of te; [Rev Bras Psiquiatr. 2009]
Working conditions, self-perceived stress, anxiety, depression ar [BMC Public Health. 2008]
[Use of personal protective equipment for motorcycle taxi driver [Cad Saude Publica. 2014]
Relationship of psychosocial work factors and health-related quality of life in r [Ind Health. 2007]
Occupational factors associated with low back pain in urban taxi drive [Occup Med (Lond). 2005]

See reviews...
See all...

Related information
MedGen

NCBI Resources How To Sign in to NCBI

PubMed.gov
US National Library of Medicine
National Institutes of Health

PubMed Advanced Search

Article types
Customize ...

Text availability
Abstract
Free full text
Full text

Publication dates
5 years
10 years
Custom range...

Species
clear
✓ Humans

Languages
clear
✓ Portuguese
Customize ...

Clear all
[Show additional filters](#)

Abstract

Filters activated: Humans, Portuguese. [Clear all](#)

✓ 1 item was added to the Clipboard

Clipboard items will be lost after eight hours of inactivity. The maximum number of Clipboard items is 500.

Cad Saude Publica. 2015 Jan;31(1):97-110.

[Association between psychosocial aspects of work and quality of life among motorcycle taxi drivers].
[Article in Portuguese]
Teixeira JR, Boery EN, Casotti CA, Araújo TM, Pereira R, Ribeiro J, Rios MA, Amorim CR, Moreira RM, Boery RN, Sales ZN.

Abstract
This study aimed to evaluate the quality of life of motorcycle taxi drivers and the association with psychosocial characteristics of their work. This was a cross-sectional epidemiological study with a sample of 400 motorcycle taxi drivers in Jequié, Bahia State, Brazil. The study used a form containing demographic and socioeconomic data, WHO Quality of Life-Bref Questionnaire (WHOQOL-Bref), and the Job Content Questionnaire (JCQ). Motorcycle taxi drivers with greater decision-making control over their work showed better self-rated quality of life in the psychological domain; those with high psychological demands presented better self-rated quality of life in the social relations and environmental domains; those with high strain and active work showed better self-rated quality of life in the social and environmental domains. The psychosocial work environment and especially decision-making autonomy were thus important determinants of self-rated quality of life in this group of motorcycle taxi drivers.

PMID: 25715295 [PubMed - indexed for MEDLINE] Free full text
Item in clipboard

Publication Types, MeSH Terms

LinkOut - more resources

Send to: Clipboard: 1 item

Full text links
free full text available at [SciELO.org](#)

Save items
★ Add to Favorites

Similar articles
Impact of the psychosocial aspects of work on the quality of life of te; [Rev Bras Psiquiatr. 2009]
Working conditions, self-perceived stress, anxiety, depression ar [BMC Public Health. 2008]
[Use of personal protective equipment for motorcycle taxi driver [Cad Saude Publica. 2014]
Relationship of psychosocial work factors and health-related quality of life in r [Ind Health. 2007]
Occupational factors associated with low back pain in urban taxi drive [Occup Med (Lond). 2005]

See reviews...
See all...

Related information
MedGen

Recent Activity
[Turn Off](#) [Clear](#)

NCBI Resources How To Sign in to NCBI

PubMed.gov
US National Library of Medicine
National Institutes of Health

PubMed

Advanced

Search

Help

Filters activated: Humans, Portuguese. [Clear all](#)

PubMed

PubMed comprises more than 24 million citations for biomedical literature from MEDLINE, life science journals, and online books. Citations may include links to full-text content from PubMed Central and publisher web sites.

PubMed COMMONS

Featured comment - Jun 22
New or improved? @AMartinezArias offers alternative interpretation of region-specific epiblast stem cells.
[1 usa.gov/1Md9ZZ0](#)

Using PubMed

[PubMed Quick Start Guide](#)
[Full Text Articles](#)
[PubMed FAQs](#)
[PubMed Tutorials](#)
[New and Noteworthy](#)

PubMed Tools

[PubMed Mobile](#)
[Single Citation Matcher](#)
[Batch Citation Matcher](#)
[Clinical Queries](#)
[Topic-Specific Queries](#)
[Clipboard \(1\)](#)

More Resources

[MeSH Database](#)
[Journals in NCBI Databases](#)
[Clinical Trials](#)
[E-Utilities \(API\)](#)
[LinkOut](#)

É possível acessar o clipboard pela página inicial do PubMed

NCBI Resources How To Sign in to NCBI

PubMed.gov
US National Library of Medicine
National Institutes of Health

MeSH

Advanced

Agora vamos analisar o MeSH que é outra ferramenta muito útil no PubMed. Basta selecioná-la na lista de opções.

PubMed

PubMed comprises more than 24 million citations for biomedical literature from MEDLINE, life science journals, and online books. Citations may include links to full-text content from PubMed Central and publisher web sites.

PubMed COMMONS

Featured comment - Jun 22
New or improved? @AMartinezArias offers alternative interpretation of region-specific epiblast stem cells.

Using PubMed

[PubMed Quick Start Guide](#)
[Full Text Articles](#)
[PubMed FAQs](#)
[PubMed Tutorials](#)
[New and Noteworthy](#)

PubMed Tools

[PubMed Mobile](#)
[Single Citation Matcher](#)
[Batch Citation Matcher](#)
[Clinical Queries](#)
[Topic-Specific Queries](#)
[Clipboard \(1\)](#)

More Resources

[MeSH Database](#)
[Journals in NCBI Databases](#)
[Clinical Trials](#)
[E-Utilities \(API\)](#)
[LinkOut](#)

O MeSH é um banco de termos para buscas pelo PubMed. Pode-se acessá-lo pela página do PubMed aqui, ou direto pela caixa de buscas no topo do portal

NCBI Resources How To Sign in to NCBI

PubMed.gov
US National Library of Medicine
National Institutes of Health

MeSH Search

Advanced Help

PubMed
PubMed comprises more than 30 million MEDLINE, life science journals, and online books. Citations may include links to full-text content from PubMed Central and publisher web sites.

Agenda
Agora vamos construir uma pesquisa bem específica utilizando o MeSH. Vamos procurar artigos que relacionem visão dupla com ataques cardíacos. Primeiro pesquisamos visão dupla...

COMMONS

Featured comment - Jun 22
New or improved? @AMartinezArias offers alternative interpretation of region-specific epiblast stem cells.
1.usa.gov/1Md9ZZ0

Using PubMed

- PubMed Quick Start Guide
- Full Text Articles
- PubMed FAQs
- PubMed Tutorials
- New and Noteworthy

PubMed Tools

- PubMed Mobile
- Single Citation Matcher
- Batch Citation Matcher
- Clinical Queries
- Topic-Specific Queries
- Clipboard (1)

More Resources

- MeSH Database
- Journals in NCBI Databases
- Clinical Trials
- E-Utilities (API)
- LinkOut

NCBI Resources How To Sign in to NCBI

MeSH double vision Search

Create alert Limits Advanced Help

Display Settings: Full

Diplopia
A visual symptom in which a single object is perceived by the visual cortex as two objects rather than one. Disorders associated with this condition include REFRACTIVE ERRORS; STRABISMUS; OCULOMOTOR NERVE DISEASES; TROCHLEAR NERVE DISEASES; ABDUCENS NERVE DISEASES; and diseases of the BRAIN STEM.

PubMed search builder options

Subheadings:

- ☐ analysis
- ☐ anatomy and histology
- ☐ blood
- ☐ cerebrospinal fluid
- ☐ chemically induced
- ☐ classification
- ☐ complications
- ☐ congenital
- ☐ cytology
- ☐ diagnosis
- ☐ drug therapy
- ☐ economics
- ☐ history
- ☐ immunology
- ☐ metabolism
- ☐ microbiology
- ☐ nursing
- ☐ organization and administration
- ☐ parasitology
- ☐ pathology
- ☐ physiology
- ☐ radiography
- ☐ radionuclide imaging
- ☐ radiotherapy
- ☐ rehabilitation
- ☐ statistics and numerical data
- ☐ surgery
- ☐ therapy
- ☐ ultrasonography
- ☐ virology

☐ Restrict to MeSH Major Topic.

☐ Do not include MeSH terms found below this term in the MeSH hierarchy.

Tree Number(s): C10.597.751.941.339, C11.966.339, C23.888.592.763.941.339
MeSH Unique ID: D004172
Entry Terms:

- Diplopias
- Double Vision
- Vision, Double
- Diplopia, Horizontal
- Diplopias, Horizontal

PubMed Search Builder

Add to search builder AND Search PubMed

Related information

- PubMed
- PubMed - Major Topic
- Clinical Queries
- NLM MeSH Browser
- MedGen

Recent Activity

Turn Off Clear

- double vision (1) MeSH
- Diplopia MeSH
- ("Diplopia"[Mesh]) AND "Myocardial Infarction"[Mesh] (9) PubMed
- ("Diplopia"[Mesh]) AND "Myocardial Infarction"[Mesh] AND (Portugu... (0) PubMed
- ("Diplopia"[Mesh]) AND "Myocardial Infarction"[Mesh] AND (Humans[... (0) PubMed

O Mesh retorna com o termo DIPLOIA e sua definição. Vamos combinar o termo com a segunda parte da nossa busca. Para isso, temos que enviar o termo para a PubMed Search Builder utilizando os conectivos AND, OR ou NOT.

NCBI Resources How To Sign in to NCBI

MeSH MeSH heart attack Search

Create alert Limits Advanced Help

Display Settings: Full

Myocardial Infarction
NECROSIS of the MYOCARDIUM caused by
Year introduced: 1979

PubMed search builder options

Subheadings:

<input type="checkbox"/> analysis	<input type="checkbox"/> enzymology	<input type="checkbox"/> physiology
<input type="checkbox"/> anatomy and histology	<input type="checkbox"/> epidemiology	<input type="checkbox"/> physiopathology
<input type="checkbox"/> blood	<input type="checkbox"/> ethnology	<input type="checkbox"/> prevention and control
<input type="checkbox"/> cerebrospinal fluid	<input type="checkbox"/> etiology	<input type="checkbox"/> psychology
<input type="checkbox"/> chemically induced	<input type="checkbox"/> genetics	<input type="checkbox"/> radiography
<input type="checkbox"/> chemistry	<input type="checkbox"/> history	<input type="checkbox"/> radionuclide imaging
<input type="checkbox"/> classification	<input type="checkbox"/> immunology	<input type="checkbox"/> radiotherapy
<input type="checkbox"/> complications	<input type="checkbox"/> legislation and jurisprudence	<input type="checkbox"/> rehabilitation
<input type="checkbox"/> congenital	<input type="checkbox"/> metabolism	<input type="checkbox"/> statistics and numerical data
<input type="checkbox"/> cytology	<input type="checkbox"/> microbiology	<input type="checkbox"/> surgery
<input type="checkbox"/> diagnosis	<input type="checkbox"/> mortality	<input type="checkbox"/> therapy
<input type="checkbox"/> diet therapy	<input type="checkbox"/> nursing	<input type="checkbox"/> ultrasonography
<input type="checkbox"/> drug therapy	<input type="checkbox"/> organization and administration	<input type="checkbox"/> urine
<input type="checkbox"/> economics	<input type="checkbox"/> parasitology	<input type="checkbox"/> veterinary
<input type="checkbox"/> embryology	<input type="checkbox"/> pathology	<input type="checkbox"/> virology

☐ Restrict to MeSH Major Topic.
☐ Do not include MeSH terms found below this term in the MeSH hierarchy.

Tree Number(s): C14.280.647.500, C14.907.585.500
MeSH Unique ID: D009203
Entry Terms:
• Infarction, Myocardial
• Infarctions, Myocardial
• Myocardial Infarctions

Send to: PubMed Search Builder

"Diplopia"[Mesh]

Add to search builder AND Search PubMed

YouTube Tutorial

Related information

A sua pesquisa pode ser ainda mais refinada utilizando os SUBHEADINGS. Ao selecionar um deles, você limita o assunto dos artigos que serão buscados.

Recent Activity

Turn Off Clear

heart attack (1) MeSH
Myocardial Infarction MeSH
Diplopia MeSH
double vision (1) MeSH
duble vision (44)

See Also:

- Heart Rupture, Post-Infarction

All MeSH Categories

Diseases Category

Cardiovascular Diseases

Heart Diseases

Myocardial Ischemia

Myocardial Infarction

Anterior Wall Myocardial Infarction

Inferior Wall Myocardial Infarction

Myocardial Stunning

Shock, Cardiogenic

All MeSH Categories

Diseases Category

Cardiovascular Diseases

Vascular Diseases

Myocardial Ischemia

Myocardial Infarction

Anterior Wall Myocardial Infarction

Inferior Wall Myocardial Infarction

Myocardial Stunning

No-Reflow Phenomenon

Shock, Cardiogenic

Utilizando a barra de rolagem à direita, podemos verificar que além dos subheadings o MeSH mostra a "explosão" do termo. Isso significa que ele mostra a hierarquia em que o termo se encontra. Algumas vezes é possível especificar mais o termo em questão. Por exemplo, buscar artigos que tratem apenas de infartos da parede posterior do miocárdio.

NCBI Resources How To Sign in to NCBI

MeSH MeSH heart attack Search

Create alert Limits Advanced Help

Display Settings: Full Send to:

Myocardial Infarction

NECROSIS of the MYOCARDIUM caused by an obstruction of the blood supply to the heart (CORONARY CIRCULATION).
Year introduced: 1979

PubMed search builder options
Subheadings:

<input type="checkbox"/> analysis	<input type="checkbox"/> enzymology	<input type="checkbox"/> physiology
<input type="checkbox"/> anatomy and histology	<input type="checkbox"/> epidemiology	<input type="checkbox"/> physiopathology
<input type="checkbox"/> blood	<input type="checkbox"/> ethnology	<input type="checkbox"/> prevention and control
<input type="checkbox"/> cerebrospinal fluid	<input type="checkbox"/> etiology	<input type="checkbox"/> psychology
<input type="checkbox"/> chemically induced	<input type="checkbox"/> genetics	<input type="checkbox"/> radiography
<input type="checkbox"/> chemistry	<input type="checkbox"/> history	<input type="checkbox"/> radionuclide imaging
<input type="checkbox"/> classification	<input type="checkbox"/> immunology	<input type="checkbox"/> radiotherapy
<input type="checkbox"/> complications	<input type="checkbox"/> legislation and jurisprudence	<input type="checkbox"/> rehabilitation
<input type="checkbox"/> congenital	<input type="checkbox"/> metabolism	<input type="checkbox"/> statistics and numerical data
<input type="checkbox"/> cytology	<input type="checkbox"/> microbiology	
<input type="checkbox"/> diagnosis	<input type="checkbox"/> mortality	
<input type="checkbox"/> diet therapy	<input type="checkbox"/> nursing	
<input type="checkbox"/> drug therapy	<input type="checkbox"/> organization and administration	
<input type="checkbox"/> economics	<input type="checkbox"/> parasitology	
<input type="checkbox"/> embryology	<input type="checkbox"/> pathology	<input type="checkbox"/> virology

☐ Restrict to MeSH Major Topic.
☐ Do not include MeSH terms found below this term in the MeSH hierarchy.

Tree Number(s): C14.280.647.500, C14.907.585.500
MeSH Unique ID: D009203
Entry Terms:

- Infarction, Myocardial
- Infarctions, Myocardial
- Myocardial Infarctions

Outra opção oferecida pelo MeSH é de que os artigos encontrados pelo PubMed tenham que ter como tópico principal o termo desejado e não apenas citá-lo. Vamos usar essa opção para a nossa pesquisa.

Quando se realiza uma pesquisa o Pubmed vai procurar o termo e todos os termos hierarquicamente inferiores a ele pela explosão. É possível marcar uma opção para que ele busque somente pelo termo específico

PubMed Search Builder

"Diplopia" [Mesh]

Add to search builder AND Search PubMed

YouTube Tutorial

Related information

PubMed
PubMed - Major Topic
Clinical Queries
NLM MeSH Browser
dbGaP Links
MedGen

Recent Activity

Turn Off Clear

- heart attack (1) MeSH
- Myocardial Infarction MeSH
- Diplopia MeSH
- double vision (1) MeSH
- duble vision (44) MeSH

NCBI Resources How To Sign in to NCBI

MeSH MeSH heart attack Search

Create alert Limits Advanced Help

Display Settings: Full Send to:

Myocardial Infarction

NECROSIS of the MYOCARDIUM caused by an obstruction of the blood supply to the heart (CORONARY CIRCULATION).
Year introduced: 1979

PubMed search builder options
Subheadings:

<input type="checkbox"/> analysis	<input type="checkbox"/> enzymology	<input type="checkbox"/> physiology
<input type="checkbox"/> anatomy and histology	<input type="checkbox"/> epidemiology	<input type="checkbox"/> physiopathology
<input type="checkbox"/> blood	<input type="checkbox"/> ethnology	<input type="checkbox"/> prevention and control
<input type="checkbox"/> cerebrospinal fluid	<input type="checkbox"/> etiology	<input type="checkbox"/> psychology
<input type="checkbox"/> chemically induced	<input type="checkbox"/> genetics	<input type="checkbox"/> radiography
<input type="checkbox"/> chemistry	<input type="checkbox"/> history	<input type="checkbox"/> radionuclide imaging
<input type="checkbox"/> classification	<input type="checkbox"/> immunology	<input type="checkbox"/> radiotherapy
<input type="checkbox"/> complications	<input type="checkbox"/> legislation and jurisprudence	<input type="checkbox"/> rehabilitation
<input type="checkbox"/> congenital	<input type="checkbox"/> metabolism	<input type="checkbox"/> statistics and numerical data
<input type="checkbox"/> cytology	<input type="checkbox"/> microbiology	<input type="checkbox"/> surgery
<input type="checkbox"/> diagnosis	<input type="checkbox"/> mortality	<input type="checkbox"/> therapy
<input type="checkbox"/> diet therapy	<input type="checkbox"/> nursing	<input type="checkbox"/> ultrasonography
<input type="checkbox"/> drug therapy	<input type="checkbox"/> organization and administration	<input type="checkbox"/> urine
<input type="checkbox"/> economics	<input type="checkbox"/> parasitology	<input type="checkbox"/> veterinary
<input type="checkbox"/> embryology	<input type="checkbox"/> pathology	<input type="checkbox"/> virology

☒ Restrict to MeSH Major Topic.
☐ Do not include MeSH terms found below this term in the MeSH hierarchy.

Tree Number(s): C14.280.647.500, C14.907.585.500
MeSH Unique ID: D009203
Entry Terms:

- Infarction, Myocardial
- Infarctions, Myocardial
- Myocardial Infarctions
- Cardiovascular Stroke

Depois que a sua PubMed Search Builder estiver pronta, com os termos e opções do MeSH desejadas e coordenadas utilize o Search PubMed para buscar.

PubMed Search Builder

("Diplopia"[Mesh]) AND "Myocardial Infarction"[Majr]

Add to search builder AND Search PubMed

YouTube Tutorial

Related information

PubMed
PubMed - Major Topic
Clinical Queries
NLM MeSH Browser
dbGaP Links
MedGen

Recent Activity

Turn Off Clear

- heart attack (1) MeSH
- Myocardial Infarction MeSH
- Diplopia MeSH
- double vision (1) MeSH
- duble vision (44) MeSH

NCBI Resources How To Sign in to NCBI

PubMed.gov US National Library of Medicine National Institutes of Health

PubMed ("Diplopia"[Mesh]) AND "Myocardial Infarction"[Majr] Search

Create RSS Create alert Advanced Help

Article types Customize ...

Text availability Abstract Free full text Full text

Publication dates 5 years 10 years Custom range...

Species Humans

Languages Customize ...

Clear all Show additional filters

Summary Sort by Most Recent

Results: 4

1. [Triad of emboli in acute flare](#)
Kelly ME, Dodd J, Barry M.
Ir Med J. 2014 May;107(5):152-3.
PMID: 24908863
[Similar articles](#)

2. [Spontaneous subperiosteal orbital hemorrhage following thrombolytic therapy for myocardial infarction](#)
Diatchuk V, Rehany U, Rumelt S.
Ophthal Plast Reconstr Surg. 2007 Nov-Dec;23(6):482-4.
PMID: 18030123
[Similar articles](#)

3. [\[Diplopia and cardiogenic shock\]](#)
Kollmeier M, Brodhun M, Sliwka U, Sigusch H, Witte OW, Heide G.
Nervenarzt. 2006 Feb;77(2):187-8, 90-1. German.
PMID: 15905979
[Similar articles](#)

4. [Diplopia and oral anticoagulants](#)
Penney JP, Jain VK.
Br Med J. 1967 May 6;2(5548):375. No abstract available.
PMID: 6023143 [Free PMC Article](#)
[Similar articles](#)

Summary Sort by Most Recent

Send to: Clipboard: 1 item

Filters: [Manage Filters](#)

New feature
Try the new Display Settings option - [Sort by Relevance](#)

1 free full-text article in PubMed Central
Diplopia and oral anticoagulants.
[Br Med J. 1967]

Find related data
Database: Select Find items

Search details
"Diplopia"[Mesh] AND "Myocardial Infarction"[Majr]
Search See more...

Recent Activity
[Turn Off](#) [Clear](#)

NCBI Resources How To Sign in to NCBI

PubMed.gov US National Library of Medicine National Institutes of Health

Books Advanced Search

Defina os termos da busca

PubMed
PubMed comprises more than 24 million citations for biomedical literature from MEDLINE, life science journals, and online books. Citations may include links to full-text content from PubMed Central and publisher web sites.

PubMed COMMONS

Featured comment - Jun 22
New or improved? @AMartinezArias offers alternative of region-specific epiblast stem cells.
9Z70

Using PubMed

PubMed Quick Start Guide
Full Text Articles
PubMed FAQs
PubMed Tutorials
New and Noteworthy

PubMed Mobile
Single Citation Matcher
Batch Citation Matcher
Clinical Queries
Topic-Specific Queries
Clipboard (1)

MeSH Database
Journals in NCBI Databases
Clinical Trials
E-Utilities (API)
LinkOut

You are here: NCBI > Literature > PubMed Write to the Help Desk

GETTING STARTED	RESOURCES	POPULAR	FEATURED	NCBI INFORMATION
NCBI Education	Chemicals & Bioassays	PubMed	Genetic Testing Registry	About NCBI
NCBI Help Manual	Data & Software	Bookshelf	PubMed Health	Research at NCBI
NCBI Handbook	DNA & RNA	PubMed Central	GenBank	NCBI News
Training & Tutorials	Domains & Structures	PubMed Health	Reference Sequences	NCBI FTP Site
	Genes & Expression	BLAST	Gene Expression Omnibus	NCBI on Facebook

Para terminar esse tutorial, a última dica quanto ao uso do PubMed é que ele também dispõe de livros no seu banco de dados. Pode-se procurar por autor, título, editora e etc.

NCBI Resources How To Sign in to NCBI

Bookshelf Books strachan Search

Display Settings: Summary, 20 per page, Sorted by Relevance

Results in this book: 7

Genomes. 2nd edition.
Brown TA.
Oxford: Wiley-Liss; 2002.

strachan Search this book

Table of contents

- Chapter 15. How Genomes Evolve. 1. Show details (3)
- Chapter 12. Regulation of Genome Activity. 2. Show details (3)
- Chapter 10. Synthesis and Processing of RNA. 3. Show details (3)
- Chapter 2. Genome Anatomies. 4. Show details (2)
- Chapter 1. The Human Genome. 5. Show details (2)
- Chapter 6. Sequencing Genomes. 6. Show details (1)
- Chapter 5. Mapping Genomes. 7. Show details (1)

Images search in this book

Find related data
Database: Select
Find items

Search details
strachan[All Fields]
Search

Recent activity
Turn Off Clear

Send to: strachan (273)

Os livros que existem no banco de dados do PubMed normalmente estão divididos por capítulos e subtítulos. Essa dica também é válida para buscar imagens para as suas apresentações em powerpoint ou programas similares

Obrigado por utilizar o tutorial e faça bom proveito dessa ferramenta de pesquisa de artigos científicos.